



Issued on 7 July 1997

**High-Frequency Switch-Mode
Regulated and Filtered
Battery Charger**

TYPE:

6012 H 202

REFERENCE:

NEMO 12

SERIAL N°:

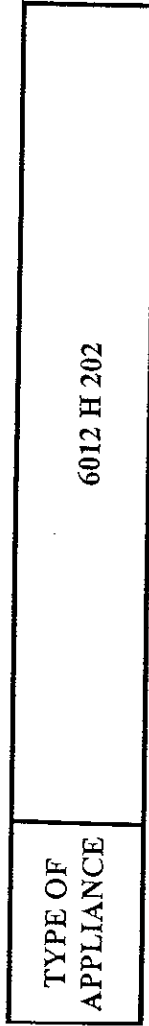
CUSTOMER:

SUPPLIER: CRISTEC

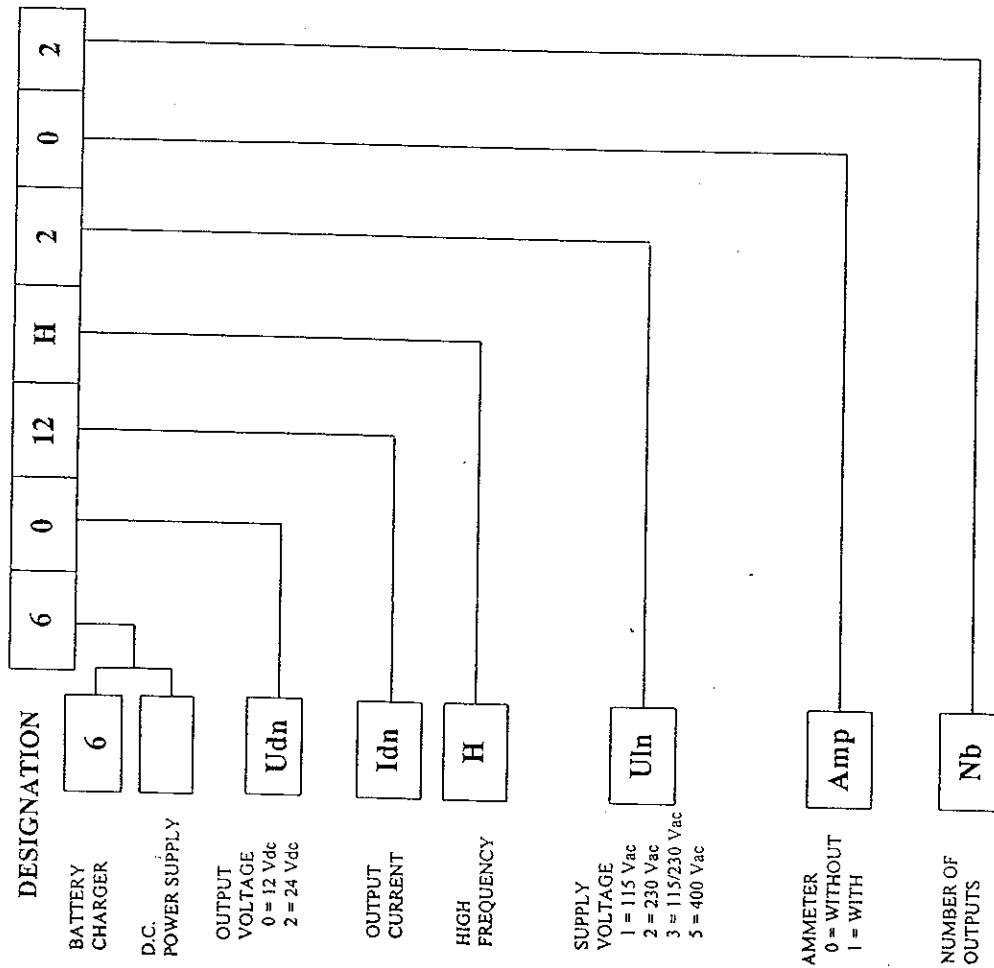
47, Avenue Pierre Mendès France, 29000 QUIMPER
Tel: +33 (0)2 98 53 80 82 Fax: +33 (0)2 98 55 64 94



IDENTIFICATION



Power supply or charger type designation procedure





CONTENTS OF THE DOCUMENTATION

DOCUMENTATION / IDENTIFICATION	04251DA
DOCUMENTATION ON THE CDM RANGE	CDMCDA
SPARE PARTS LIST	03843RA
MOUNTING AND SPACE REQUIREMENT PLAN	0425101
CONNECTION AND SETTING DIAGRAM	0425103



**NEMO
High-Frequency Switch-Mode
Charger Range**

SUPPLIERS: CRISTEC

47, Avenue Pierre Mendès France, 29000 QUIMPER
Tel: +33 (0)2 98 53 80 82 Fax: +33 (0)2 98 55 64 94



CONTENTS

DESCRIPTION	PAGE
Cover	1
Contents	2
General	3
Electrical Characteristics	4
Mechanical Characteristics	5
Description - Operation	6
Block Diagram	6
Installation - Connection - Settings	7
Troubleshooting	8
Maintenance	9
General Guidelines on Equipment Installation	10

1 - GENERAL

This manual is intended for equipment users and installation and maintenance engineers. The manual must be read thoroughly before any operations are undertaken on the product and all users must be informed.

Choice of Appliance

Battery chargers are designed to provide the battery's charging and floating current and, depending on requirements, the operating current. The CRISTEC models are filtered and, in the event of battery cut-out or damage, allow direct current to be supplied to the load centres.

The choice of appliance will depend on applicable standards, battery type (technology used, number of cells, capacity), amount of current consumed by the load centres and installation and environment constraints.

Appliances running on HF switch mode have the following advantages:

- Less space required
- Low weight
- Very low noise level
- Direct current for working power supply
- Low residual ripple.



2 - TECHNICAL CHARACTERISTICS

2.1 ELECTRICAL CHARACTERISTICS

2.1.1 Power Supply

- Rated voltage of single-phase network U_{in} : $\pm 10\%$.
- Frequency F_n : $\pm 5\%$.
- In-line input current according to model (see plan of connections and settings).

2.1.2 Use

- Regulated output voltage U_{dn} : $\pm 1\%$ (before fuse or separator).
- Max. ripple factor $\leq 1\%$ (peak value to mean value).
- Electronic overload protection or limitation of the output current to the rated current level I_{dn} .

2.1.3 Modes of operation

a) FLOATING

Automatic operation in which the charger provides a constant voltage regulated to $\pm 1\%$ and a current with a maximum limit corresponding to the rated level of the charger.

This floating voltage corresponds to the values indicated by the storage cell manufacturers and is adjustable from 2.17 V to 2.3 V per open or sealed lead cell and from 1.4 V to 1.45 V per nickel-cadmium cell.

b) RAPID CHARGE (optional according to model)

Operation used to make up a temporary battery discharge. This function is designed to restore the battery to its initial capacity more quickly. It is possible to activate the rapid charge by an external contact.

Rapid charge voltage adjustable from 2.25 V to 2.4 V per open or sealed lead cell and from 1.45 V to 1.55 V per nickel-cadmium cell.

2.1.4 Controls, Signalling and Display

The cover comprises the following components as standard:

- one yellow "Mains power on" LED,
- one green "Charge" or "Charger voltage" LED.



Possibility of activating a rapid charge or voltage control according to the battery temperature (see plan of connections and settings).

Possibility of connecting a voltmeter and ammeter to certain chargers (see plan of connections and settings).

2.1.5 Protection

- Network input: Fuse.
- Power output: Fuse(s) sized to the rated output of the charger, electronic protection by limiting the output current.
- Internal protection: Safety circuit provided by overvoltage arrester networks, electronic circuits integrated into the internal converter and temperature circuit.
- Optional protection: contact CRISTEC for information on relays to monitor insulation, voltage faults and charging faults, voltage/current controller boards, remote controls, etc.

2.1.6 Interference Suppression

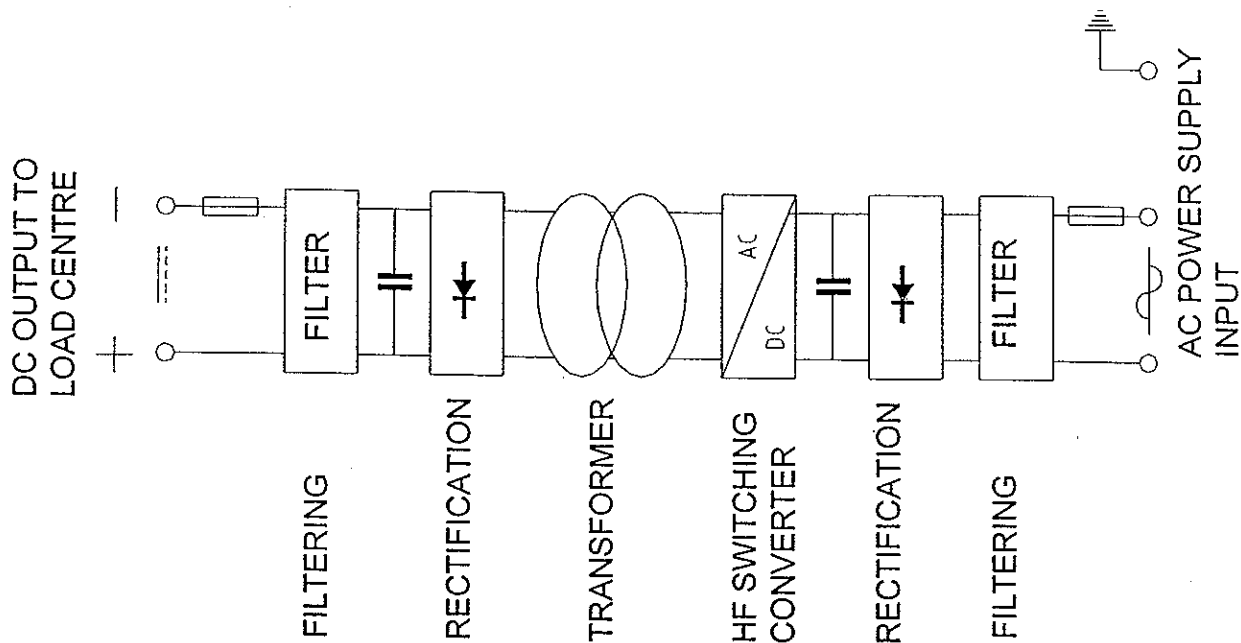
- Conformity with NF EN 50081-2 (EN 55022A) Emission (conduction and radiation)
NF EN 50082-2 Immunity
- Special charger design to attenuate radio disturbance by conduction or radiation.
- Metal casing with grounding points providing effective shielding of the assembly against disturbance by radiation.
- Very low susceptibility at ambient disturbance level.
- Attenuating filters for conducted electromagnetic disturbance in common mode and differential mode.

2.2 MECHANICAL CHARACTERISTICS

- Presentation: wall-mounted unit.
- IP 20 protection as standard.
- Standard paint: salt spray-resistant polyester coating in matt black and yellow (RAL 1021).
- Dimensions: see space requirement and mounting plan.

3 - DESCRIPTION - OPERATION

3.1 BLOCK DIAGRAM



3.2 DESCRIPTION OF OPERATION

- EMC filter in common mode and differential mode on the power supply network.
- Rectification of the ac voltage by a diode bridge.
- Filtering of the dc voltage obtained by an electrolytic capacitor.
- Switching of the dc voltage at high frequency (20 to 100 kHz), by a converter.
- Transformation of the ac voltage by an HF transformer which also provides galvanic isolation.
- Rectification and filtering by an LC structure.
- EMC filtering.

3.3 ENVIRONMENT AND OPERATING CONDITIONS

- Permanent operation in accordance with the provisions laid down in section 18-01 of Bureau Véritas (Models in a steel case).
- Ambient temperature: 0 - 45°C.
- Storage temperature: -20°C +70°C
- Average relative humidity of 70% (95% without condensation).

4 - INSTALLATION - CONNECTION - SETTINGS TROUBLESHOOTING

4.1 INSTALLATION

As the appliance is cooled by natural convection, a minimum allowance must be left for installation. Around the periphery of the case (cover and four sides), there must be a ventilation space of at least 100 mm from each point of the case (except for the mounting part).

Mounting centre distance and space requirement: see enclosed drawing.

The situation of the charger must be adapted to its protection rating.



- The "Mains power on" LED is lit, the "Charge" or "Charger voltage" LED is out.
 - ⊖ Check the charger output voltage.
 - ⊖ If necessary, adjust the charger output voltage setting (potentiometer, see plan of connections and settings) to reach the floating voltage recommended by the battery manufacturer. This setting is not possible unless the output current is lower than the rated charging level.
 - ⊖ Check the condition of the output fuses and the continuity of the battery cables.
 - ⊖ Eliminate the battery, connect a resistive load across the charger terminals and check the output voltage and current.
 - The "Charge" or "Charger voltage" LED is still out after these checks.
 - ⊖ Contact the CRISTEC Technical Department who will indicate any further tests to be carried out according to the measuring and testing means available to the operator.
 - ☞ If the problem persists, contact the CRISTEC factory or the nearest stockist.
- The charger must be dismounted and sent to the factory where the internal electronic circuits are checked on an appropriate test bench.

5 - MAINTENANCE

- Switch off the charger (power input and load centre output).
- If the appliances are situated in a dusty atmosphere, clean them periodically with a vacuum cleaner as a build-up of dust prevents heat dissipation.
- An annual check on the main nuts and screws may prove necessary in highly disturbed environments (strong vibrations, wide temperature variations, etc.).
- The electrolytic capacitors must be replaced on average every ten years.
- A full technical inspection by a qualified inspector is recommended every five years. Depending on the type of appliance, this general check-up may be carried out by returning the appliance to the factory.



4.2 CONNECTION

- See enclosed drawing.
- A shielded cable connection attenuates electromagnetic disturbance and reduces the susceptibility of the appliance. This type of cable is recommended in all installations.
- The external ground terminal or lug of the appliance must be connected by a short, wide strap to the installation ground.
- The ground strap of the shielded cables must be linked to the appliance ground inside the case.
- The safety wire must be connected to the safety terminal (see plan of connections and settings).
- Separate the supply, load and control cables.
- To set the output voltage U_{din}, use the potentiometer indicated on the plan of settings.

4.3 TROUBLESHOOTING

4.3.1 Rules of Safety

- Maintenance and repairs must be carried out by the manufacturer or a competent engineer recommended by CRISTEC.
- Personnel authorized to carry out such operations must have received appropriate technical training and have the necessary experience to:
- perform tasks inside the case;
 - be aware of the dangers to which they are exposed when performing a task and the measures to be taken to minimize the danger to themselves and to others.
- Operators and users are not authorized to open the case.
- ### 4.3.2 Troubleshooting Guide
- The "Mains power on" LED remains out.
 - ⊖ Check the presence of line voltage U_{lin} across the input terminals.
 - ⊖ Check the condition of the input fuses applying the necessary safety precautions.



6 - GUIDELINES ON EQUIPMENT INSTALLATION

By virtue of European directive 89/336/EC, the equipment must conform to electromagnetic compatibility criteria → Date of application: January 1st, 1996.

The two main demands in terms of electromagnetic compatibility are:

- **Emission:** Protection of the environment against disturbance by conduction and radiation.
- **Immunity:** Absence of susceptibility in a disturbing atmosphere.

6.1 INSTALLATION

General Rules

The equipment must be installed according to the recommendations of the user manual. The main rules are as follows:

- Use shielded cables with a correct section in order to power the appliance and the load centres within acceptable tolerance limits.
(Definition criteria: nature and length of the cables, ambient temperature, voltage drop, type of tracking, etc.).
- Make sure the equipment is correctly ventilated for good heat dissipation (installation space, ambient temperature, etc.).
- Choose the location in accordance with the protection rating of the appliance.

6.2 EMC-RELATED INSTALLATION GUIDELINES

Cables:

- Use shielded cable for all connections (*). The shielding must be grounded on the transmitter side and the receiver side.
- Keep the cables and shielding connections as short as possible.
- Feed the cables as close as possible to the ground ("loose" cables or loops are to be avoided - fasten the cables down to the ground).
- Separate the supply and load cables.
- Separate the power and control cables (minimum 200 mm).
- The cables should only supply power to the appliance. A branch connection or bridge to supply another appliance are to be prohibited.

(*) This is a recommendation but is not compulsory. The installation electrician will consider the EMC environment and decide whether or not to use shielded cable.

6.3 METAL CASING

- The cases or cabinets for the appliances or containing the equipment must be metallic or have a conductive coating.
- The ground bolt or lug of the casing should be connected to the main ground by the shortest strap possible. The bolt connected to the main ground must have a good electrical contact (scratch off the paint and weld the bolt).
- The ground being the reference point of the potential, the various current-bearing parts of the equipment environment must be made equipotential by linking them together (where possible, metal shielding and troughs are grounded with the shortest straps).



6.4 ADDITIONAL ATTENUATOR SYSTEMS

- The coils of contactors, relays, solenoid valves and electromagnets must be equipped with overvoltage arresters (RC circuits, varistor or diode on direct current, RC circuits or varistor on alternating current).
- Additional filters may be mounted according to applicable standards. Disturbance attenuation enables the specified levels to be attained. The filters must be mounted as near as possible to the appliance.

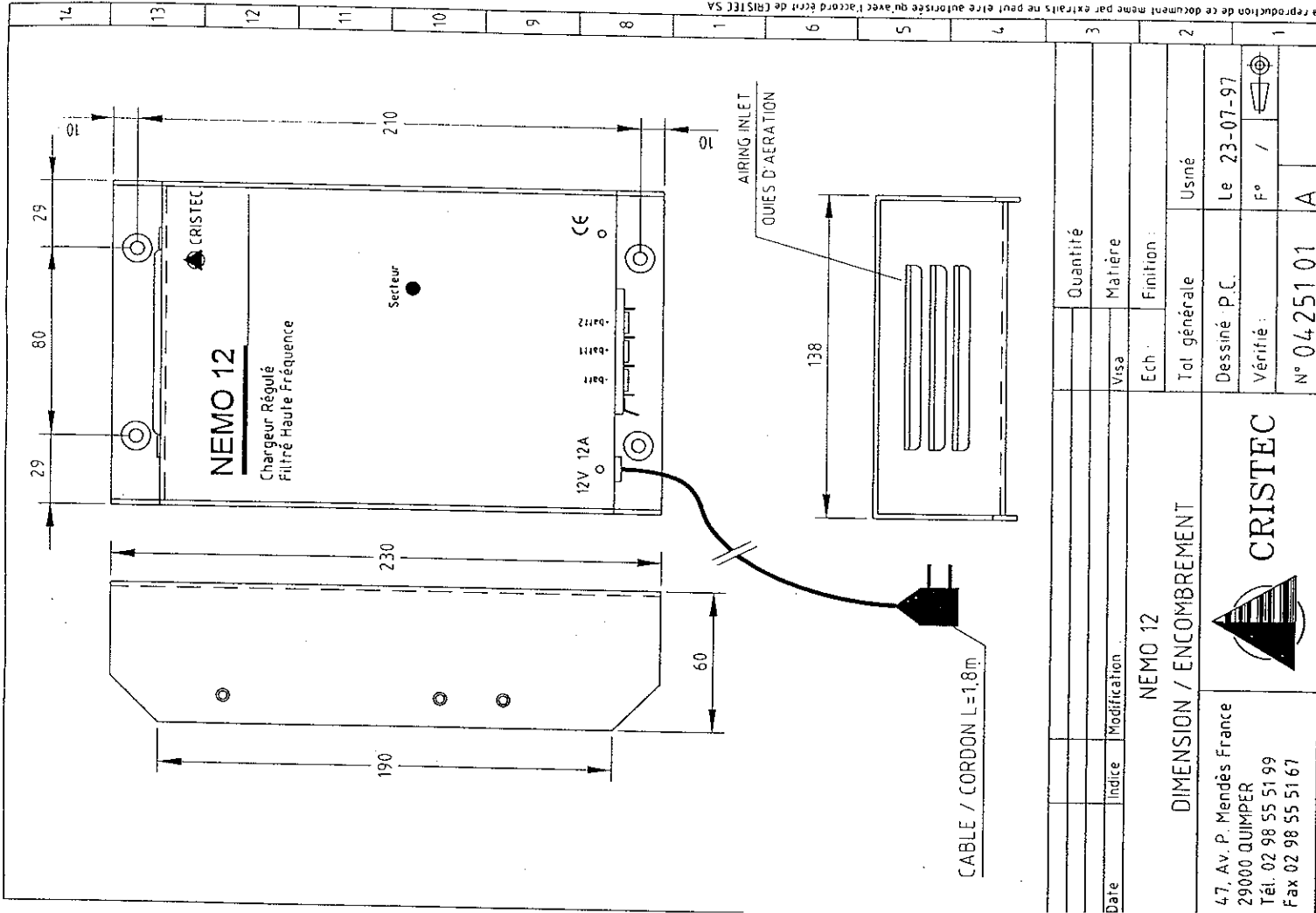
Remember that filters increase the leakage current.

As a general rule, we recommend consulting the manufacturer before installing a filter, particularly on the load and control cable side.

SPARE PARTS LIST

SEEL003843A N° 03843RAA

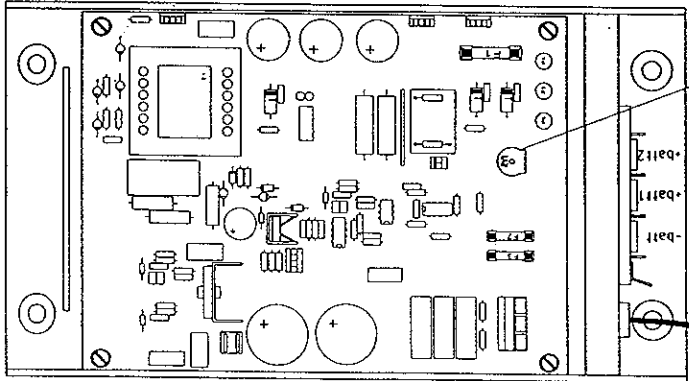
Ind	Description	Rep	Description	Partnumber	Manufacturer	Item code
A			CHARGER PCB 12V - 12A			
					DATE :	NATO CODE :
					24/07/1997	F3645
1	F1 FUSE 10A			TYPE D8	CEHESS	30001462
2	F2 & 3 FUSE 3,15A - 250V			TYPE D1	CEHESS	30004244



INPUT FUSE / FUSIBLE D'ENTREE
F2&F3: 3,15A - 250V TYPE D1
Input voltage / Tension d'alimentation
230VAC 47-63Hz
Input current / Courant d'entrée
2A

RV1: OUTPUT VOLTAGE ADJUSTMENT
RV1: REGLAGE DE LA TENSION DE SORTIE

OUTPUT FUSE / FUSIBLE DE SORTIE
F1: 15A TYPE DB
Output voltage / Tension de sortie
13.6V
Output current / Courant de sortie
12A



a reproduction de ce document même par extraits ne peut être autorisée qu'avec l'accord écrit de CRISTEC SA

Date	Indice	Modification	Quantité
			Matière
			Finition
Ech:			Tol générale
Ech:			Usiné
Dessiné P.C.			Le 23-07-97
Vérifié:			F° /
N° 0425101			A

47, Av. P. Mendès France 29000 QUIMPER Tél. 02 98 55 51 99 Fax 02 98 55 51 67			
DIMENSION / ENCOMBREMENT		NEMO 12	
CONNECTION & ADJUSTMENT		NEMO 12	
47, Av. P. Mendès France 29000 QUIMPER Tél. 02 98 55 51 99 Fax 02 98 55 51 67			
Dessiné P.C.		Le 24-07-97	
Vérifié:		F° /	
N° 0425103		A	

14 13 12 11 10 9 8 1 6 5 4 3 2 1